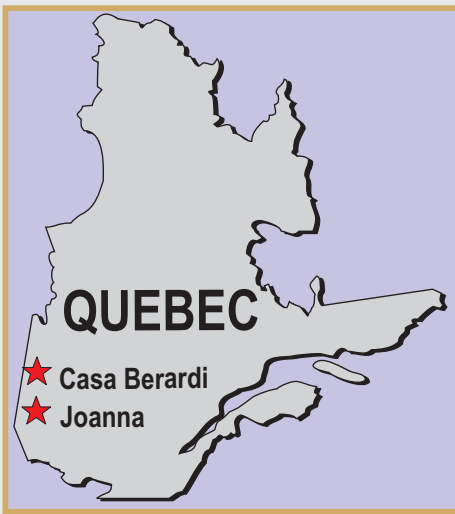
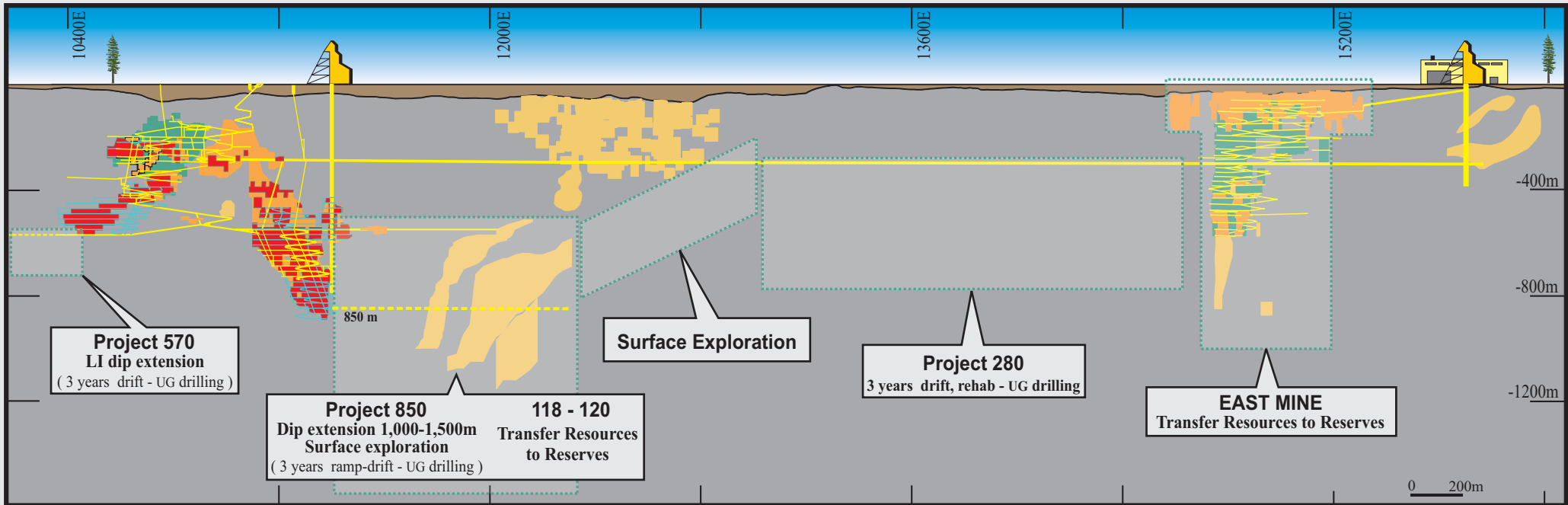
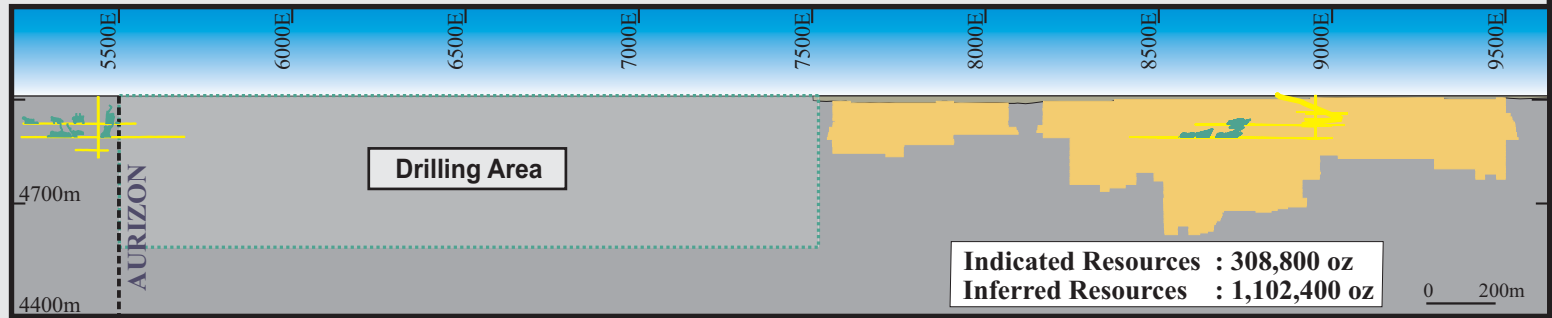


# CASA BERARDI GOLD MINE Composite Longitudinal Section



# JOANNA PROJECT Composite Longitudinal Section



- Proven & Probable Reserves
- Measured & Indicated Resources
- Inferred Resources
- Past Production
- Existing Infrastructure
- Proposed Development

**AURIZON MINES LTD.**  
**CASA BERARDI & JOANNA PROJECT**  
**QUEBEC**  
**Mineral Reserves & Resources**  
 March 28, 2007